

MDT430



TRUCK
OFF-ROAD

OUR STRENGTH IN YOUR WORK



Power
350hp / 2100RPM



Maximum Operating Weight
49,300kg



Power Load capacity up to
19.2m³ (with lid)

mullerbrasil.com



**FABRICADO
NO BRASIL**

Designed for severe applications, the **MDT 430** has features that won't let you down. For example, it has a bucket that allows the attachment of a rear lid, helping to transport materials on slopes. In addition, it has a "sandwich" type bottom - a 10mm high-resistance HARDOX upper plate, a 50mm wooden plate and a 9.5mm lower plate, ensuring greater resistance to the structure, in addition to absorbing impacts when loading. If you are looking for a strong vehicle to carry out heavy work, count on the **MDT 430**.

COMFORT AND ERGONOMICS

PERFORMANCE AND CONTROL

INNOVATION AND INTERACTIVITY



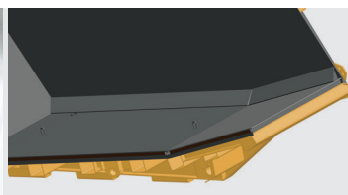
BETTER VISIBILITY

Double mirrors with independent and convex bifocal lenses, with support moved forward, improving viewing.



SYSTEM OF MONITORING

Monitoring system 7" Touchscreen Display, with real-time engine and transmission information, air conditioning control, hour meter and tachometer. It also has an inclinometer, which monitors the chassis inclination and issues alarms when the truck is at dangerous elevation, blocking the bucket and lowering it automatically. In addition, it has a rear-view camera with automatic viewing when reverse gear is engaged.



BOTTOM SANDWICH

Floor consisting of a high-resistance steel sandwich bottom and an internal wooden plate. Sides, front and upper floor of the bucket produced in high-resistance steel. Longer bucket life and greater impact absorption, reducing effort and equipment wear.



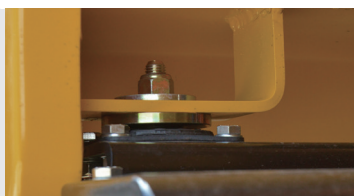
INTERNAL PANEL REFURBISHED

New front air conditioning outlets, new dashboard layout, facilitating operation and viewing of information, and new standard Müller steering wheel.



BRAKE CHAMBERS 36/36 REAR

Greater rear axle braking capacity and greater actuation stroke, optimizing efficiency and the adjustment of the brake system.



NEW CUSHIONS FOR CABIN SUSPENSION

Greater vibration absorption power and, consequently, longer component life.



POWER PLANT/MODULES ELECTRONICS

Located inside the cabin, for greater protection of these components and ease of maintenance.



BRAKE SYSTEM ABS AND ASR

ABS braking system that prevents the wheels from locking during braking. Automatic traction control on the rear axle with ASR system.



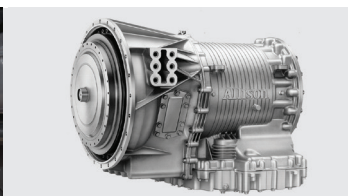
FILTER DRYER WITH VALVE PRIORITY 4 WAYS

It prioritizes the power supply of safety systems such as brakes, in addition to preventing the oxidation of valves and connections and ensuring a longer useful life for the system components.



SPRING BEAM DOUBLE INTERNSHIP

Progressive beam with two operating stages that provide greater damping power on the front axle and greater comfort to the operator.



ALLISON 6TH GENERATION TRANSMISSION

Transmission that automatically informs the level and useful life of the oil, filters and clutch. New gear selector layout.



BUCKET LID (OPTIONAL)

New reinforced articulation system that provides a greater tilt ratio with the opening. For every 1° of tilt there is an opening of 65mm, totaling 58° with 3,780mm of full opening.

MDT430 TRUCK

PFF-ROAD



TURBO ENGINE

Manufacturer	Scania Latin America Ltda
Model	DC13 – 76A
Gross Power	350hp / 2,100RPM
Maximum torque	1,636Nm / 1,500RPM
N° of Cylinders / Displacement	6 / 12.7l
Injection	Electronics
Cooling system	Air/water radiator
Pollutant emissions	MAR I, EU Stage IIIA, China PHASE III and India Bharat Stage III

ELECTRICAL SYSTEM

24V system supplied by 2 12V and 150Ah batteries

Alternator 100A

Starter motor 6hp

Electrical harnesses made up of identified and flexible wires, with sealed connectors at the joints.

LUCES	<ul style="list-style-type: none">• 2 LED headlights with high and low beam.• Front and rear LED directional lights.• Tail lights with brake light and parking light position (half light) in LED.• 2 continuous LED reversing lights.• LED courtesy light.• Backlight illumination system for display and combined instruments.• Electronic modules with communication. CAN J1939 serial.
-------	--

BRAKES

SERVICE: service brake system with ABS drum actuated by compressed air, with double independent front and rear circuit actuated by "S" type expander shaft. It has 36/36 Long Stroke brake chambers on the rear axle and 30/30 brake chambers on the front axle.

PARKING: Spring Brake type on all 4 wheels, with 36-inch membranes on the rear axle and 30-inch membranes on the front axle.

RETARDER: activated on the panel, with 6 braking stages and maximum torque of 1,763 Nm.

Service pressure 9 kgf/cm²

Braking areas
Front axle: 3,988cm²
Rear axle: 3,988cm²
TOTAL: 7,976cm²

STANDARD ITEMS

2 LED headlights and 2 LED taillights	Internal, external and side rearview mirrors	Operation and maintenance manual and parts catalog
Reverse gear audible alarm and reverse lighting	Fire extinguisher	Instrument panel with hour meter
Air suspension seat	Rear wheel stone extractor	Windshield, front wiper
Sealed battery 150Ah 900 CCA	Parking brake	Operator platform on rubber shock absorbers
Air horn	Inclinometer	Lifting points
Closed cabin with air conditioning	Fuel Gauge	Storage compartments, cup holders
Rear camera	Engine fault indicator	Analog dashboard clocks
System master key	Engine temperature gauge	Retarder
Seat belt	Warning light	Silent

TIRES

Hoop	11:25 x 25"
Tire	16:00 x 25" - 32PR E4
Front	Simple
Rear	Double
Fender	Constructed from structural steel plate, bolted to the chassis.

STEERING SYSTEM

Type	Hydrostatic with servostat and two opposing cylinders. With variable flow axial piston pump coupled directly to the engine. With emergency steering.
------	--

Minimum radius, between walls, internal 7.55m

Minimum radius, between walls 11.75m

Angle external Steering 28°

Minimum curve radius 10.83m

AXLES, SUSPENSION AND CHASSIS

AXES

Front Inverse Elliot type, with welded beam and forged steel ends.

Rear Differentials with floating half shafts and planetary hub reducers. With four planetary gears supported on conical bearings and cast steel housing. Total reduction ratio 11.73:1.

SUSPENSION

Front Double-stage semi-elliptical leaf springs, double-acting telescopic hydraulic shock absorbers, rubber bumpers and reaction bar.

Rear Rigid, with axle beam fixed to the chassis.

CHASSIS

Reinforced construction in high strength structural steel with welded joints.

OPTIONAL

- Bucket raised alarm
- Preventive maintenance contract
- Custom painting
- E3 Tire
- AM/FM/MP3 radio with USB and speakers
- Central lubrication system
- Satellite monitoring system
- Redesigned rear cover, with new arms and new fixing system

CABIN

The cabin is made of structural steel sheet. It has thermal and acoustic insulation and is equipped with an adjustable air suspension seat for the driver. It also has an auxiliary seat for the operations instructor. Low noise level: < 86 dB, providing comfort and safety for the operator.



TRANSMISSION

The **MDT 430** is equipped with a 6th generation Allison automatic transmission, offering better performance and ergonomics to the operator. Through the gear selector, it is possible to automatically check the oil level, as well as the useful life of the oil, filters and the transmission itself.

It has a hydraulic retarder integrated into the transmission, with torque converter and "Lock Up", with maximum torque of 17453.9 Nm, in reverse gear, and 15131.7 Nm, in 1st gear. It also has the "Economic Mode" system, which changes the transmission configuration to economy mode.

Manufacturer	Allison Transmissions
Model	HD 4.430 ORS
Nº of gears	5 forward and 1 aft



PANEL

Virtual terminal with 7" touchscreen display for management and control of the electronic system.

View transmission and engine fault codes, as well as ABS and ASR, air conditioning control and information on the need for preventive maintenance.

Panel with rubberized keys.

Ignition key.

Tilting joystick.

Selector lever for the "Retarder" function.

Gear selector panel.

In the column: combination switch (lever) for lights, horn, wiper/windshield washer.

SERVICE CAPACITY

Fuel	315l
Crankcase + filters	45l
Transmission	44l
Cooling system	55l
Rear axle	38l
Hydraulic system	120l

WEIGHT DISTRIBUTION

AXLE WEIGHT	EMPTY	LOADED
Front	9.675kg	18.475kg
Rear	9.625kg	30.825kg
TOTAL	19.300kg	49.300kg

LOAD CAPACITY

	No Lid	With Lid
Shallow crowning	15.0m³	15.5m³
Crowning 2:1	18.5m³	19.2m³

TIPPING

Operated by a joystick on the panel, the tilting system of the **MDT 430** is fast and efficient, generating time savings in operation and increasing productivity.

Variable flow piston pump that directly feeds the tilting hydraulic system.

Open center tilt control and a "load sense" electric stage.

Double-acting, three-stage hydraulic cylinder with self-lubricating ball joint, which does not require lubrication during maintenance.

Maximum pump flow rate	80 CC / Revolution
Maximum pressure (peaks)	250kgf/cm²
Working pressure	210 kgf/cm²
Tipping time	18s
Tilting angle	58°

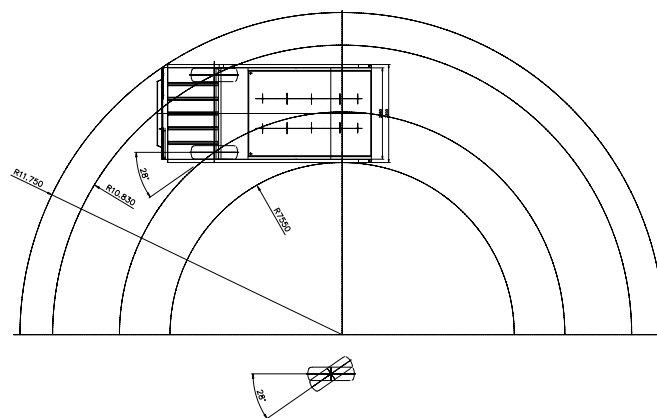
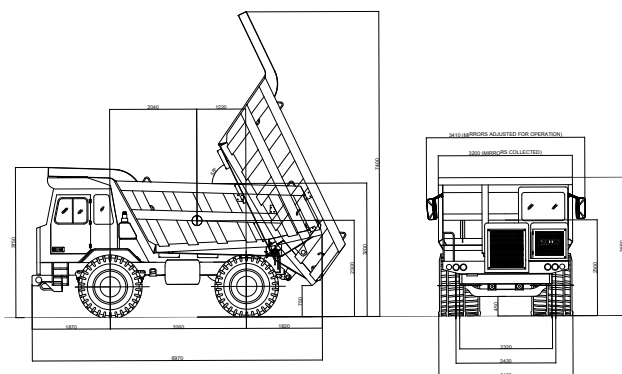
DIMENSIONS

OVERALL DIMENSIONS

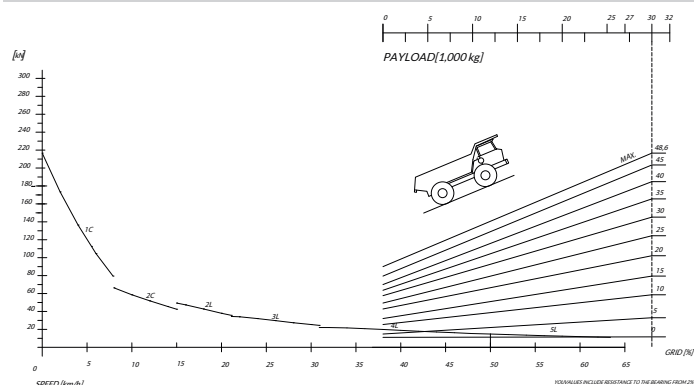
Height	3750mm
Width	3200mm
Length	6970mm
Minimum curve radius	10,830mm

TURNING RADIUS

Minimum radius between internal walls	7,550mm
Minimum radius between external walls	11,750mm
Maximum steering angle	28°
Minimum curve radius	10,830mm



PERFORMANCE



CUSTOMER SUPPORT

AFTER-SALES

Müller, through its nationwide dealer network, offers specialized technical assistance with genuine parts that are always available and accessible to you, and best of all, always close by when you need them. With factory-trained technicians and diagnostic equipment, the Müller dealership is able to offer all the guidance you need to ensure the perfect functioning and operation of your MDT 430. Consult our Müller customer service department.

GENUINE MÜLLER PARTS

The company operates in the spare parts and services market for Müller products through its dealer network throughout the country. These are genuine Müller parts, known for their quality, durability and safety, extending the useful life and ensuring full performance of the equipment.

TAKING CARE OF YOUR MDT 430 TRUCK

Preventative maintenance of your truck, combined with the inspections scheduled in your operating manual, extends its operating time and useful life, avoiding unscheduled downtime.

HOW TO BUY YOUR MDT 430 TRUCK

Contact our network of Müller Dealers today or visit www.mullerbrasil.com.

OUR STRENGTH IN YOUR WORK



Photos for illustrative purposes only.

MDT430

**TRUCK
PFF-ROAD**

 (51) 3488.3488

 adm vendas@mullerbrasil.com

 /Muller.Equip

 @muller_equip



*Specifications subject to change by the manufacturer without notice.